

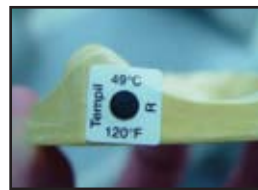
Clear Base Denture Fabrication Technique



1 **MODEL PREP:** Land area of model should be 1 mm or less above depth of sulcus to allow light penetration to border of appliance. A post-dam should be placed in upper model. A denture base shade should be provided as well. Model should be dry.



2 **BASEPLATE FABRICATION:** Do not block out any undercuts. If master model needs to be preserved, prepare a duplicate model before any alterations are made. Place a self-adhesive temperature indicator on back base of model. Paint model with Al-Cote[®] Separating Agent and allow it to dry.



3 Place model in DENTSPLY Conditioning Oven until temperature indicator turns black.



4 Take Eclipse Baseplate Resin out of package before taking model out of Conditioning Oven.



5 Place rounded side of Eclipse Baseplate Resin down on surface of model. If necessary, immediately place model with material back in Conditioning Oven for 30 – 60 seconds to further soften resin and make it easier to adapt without trapping air.



6 Adapt Eclipse Baseplate Resin to model completely filling borders. Care should be taken not to entrap any air.



7 Any excess material can be removed by using the Electric Spatula or Wax Pencil Pro to score material along border of baseplate. Excess can then be easily removed after curing.



8 Paint resin with Eclipse Air Barrier Coating and cure (menu #1) in the Eclipse Processing Unit. Upon completion of curing cycle, allow baseplate to cool to room temperature before rinsing off Air Barrier Coating.



9 Soak baseplate on model in tap water for approximately 10 – 15 minutes to re-hydrate model and facilitate removal of baseplate.



10 Remove baseplate from model and carefully trim borders. Borders should be full and rounded as in the finished denture. Roughen buccal, labial and ridge lap area of baseplate with a coarse carbide bur and prepare a chamfer border.



11 Clean prepared baseplate with tap water and a brush. Dry and then clean with isopropyl alcohol and a brush. Allow baseplate to dry.

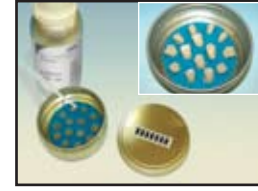


12 **TOOTH PREPARATION:** Remove all wax from teeth prior to grinding. Set hotplate temperature to 100* and allow at least 10 minutes to preheat. *For hot plates with a digital temperature reading, set the temperature to 90.



13 Deglaze the ridge lap and grind-in teeth based on the vertical dimension.

Note: See Eclipse Bonding Agent Technique sheet for alternate tooth preparation process.



14 Place the prepared and cleaned teeth into the metal container kit with Eclipse Bonding Agent liquid as indicated in the Directions For Use.



15 Place the metal container inside the metal ring on the hot plate. Temperature should already be set to 100* (from step 1). The rectangle for 40°C on the temperature strip should turn GREEN between 4 to 6 minutes. (May have to adjust temperature dial slightly.)

*For hot plates with a digital temperature reading, set the temperature to 90.

Clear Base Denture Fabrication Technique



16 Immediately remove teeth with tweezers from the bonding agent and allow them to dry before proceeding to set-up and contour step.

Note: If more than 1.5 mm of any tooth is ground off of the ridge lap area after the bonding agent application, the tooth will need bonding agent reapplied.



17 SET-UP AND CONTOUR: Place Eclipse Contour Resin into DENTSPLY Melting Pot set at 87°C, or if desired, place Set-Up Resin in DENTSPLY Conditioning Oven for 5 – 10 minutes to soften. Use only enough Set-Up Resin to set teeth into position.



18 Remove softened Set-Up Resin. Melt underside of Set-Up Resin with Electric Spatula, Wax Pencil Pro or Hot Air Gun. Place Set-Up Resin on cleaned baseplate. Seal Set-Up Resin to baseplate with Electric Spatula, Wax Pencil Pro or Hot Air Gun.



19 Set denture teeth into softened resin, being careful not to trap any air. *Do not slice through Set-Up Resin otherwise air may be incorporated into resin.* Carve away any excess Set-Up Resin so that all anatomical contours can be achieved using Eclipse Contour Resin.



20 Flow Contour Resin around necks of teeth and down to chamfer prep on baseplate. Build out anatomical contours of denture. Do not cover teeth with excess Contour Resin. Only flow enough around necks of teeth to get a clean gingival margin when carved with an instrument.



21 Contour Resin can be smoothed using the Hot Air Gun. If desired, a gentle stream of compressed air can be used to chill resin more quickly for carving. *TIP:* For easier, faster finishing, it is recommended to "contour-to-finish" instead of "bulk contouring" to finish after curing.



22 Allow resin to cool and then carve and festoon using a clean set of your favorite carving instruments. The denture should be sent to the dental office in an Eclipse Light-Safe Bag.



23 TRY-IN: Handling: When not in use, always keep appliance in the Light Safe Bag. Eclipse is light cured material. Minimize exposure to ambient light.



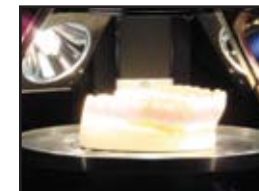
24 Teeth can be moved at try-in using electric spatula or by placing denture in 110° F water bath for 20 – 30 seconds. If a new bite is required or if denture needs to be plumped, use silicone bite registration material. Do not add wax to uncured Eclipse resins.



25 PROCESS AND FINISH: When the denture is ready to process, pour a processing model using lab stone. Note: Do not cover baseplate/contour resin border with lab stone.



26 Coat exposed Eclipse material with Eclipse Air Barrier Coating. Place denture into DENTSPLY Conditioning Oven for a minimum of 1 hour. Do not leave denture in Conditioning Oven for more than 8 hours.



27 After at least 1 hour in Conditioning Oven, remove and immediately process (menu # 2) in the Eclipse Processing Unit. Upon completion of the curing cycle, allow denture to cool to room temperature before rinsing off Air Barrier Coating.



28 Rinse off Air Barrier Coating. If desired, remount on articulator and verify occlusion. Soak denture on model in tap water for 5 minutes to facilitate removal of denture.



29 Finish and polish using your favorite finishing materials. Deliver to dental office and patient.