



ECLIPSE® Bonding Agent

Tooth pop-offs are a thing of the past. The Eclipse Bonding Agent was formulated to create an extremely strong chemical bond between acrylic teeth and Eclipse resin material. Now there is no need for the addition of mechanical retention - which reduces lab processing time up to 30%! Ideal for partial denture tight bite cases, as well as full dentures. Eclipse Bonding Agent delivers confidence driven by science.

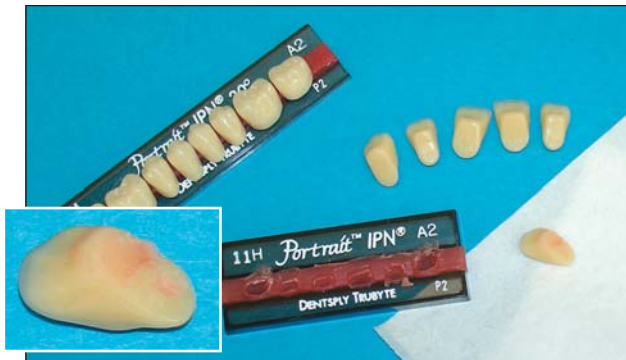
To learn more about the Eclipse Bonding Agent, contact your Dealer of choice, DENTSPLY Trubyte Sales Representative or call 1-800-786-0085.

DENTSPLY
TRUBYTE

The chemistry of a great smile.™

Ronly

Eclipse® Bonding Agent Technique



1 Remove all wax from teeth prior to grinding.



2 Deglaze the ridge lap and grind-in teeth based on the vertical dimension.



3 Place the prepared and cleaned teeth into the metal container kit with Eclipse Bonding Agent liquid as indicated in the Directions For Use.



4 Place the metal container inside the metal ring on the hot plate. Set temperature dial to 100 for five minutes. The temperature strip for 40°C should turn GREEN after five minutes. (May have to adjust temperature dial slightly.)



5 Remove teeth with tweezers from the bonding agent immediately and allow them to dry before proceeding to set-up the teeth and contour.

NOTE: If more than 1.5 mm of any tooth is ground off of the ridge lap area, the tooth will need bonding agent reapplied.

ECLIPSE®
PROSTHETIC RESIN SYSTEM

Bonding Agent Kit

Kit Includes:

- 1 - Bonding Agent 180g (6.3 fl. oz.) ReOrder #905545
- 1 - Metal Container Kit - ReOrder #905560
- 2 - Plastic Droppers
- 1 - Pair Tweezers
- 1 - VWR™ Electric Hot Plate with Metal Ring